

# Young Composers Digital Course

with Helen Woods

## How I Created

### The Dripping Tap Canon

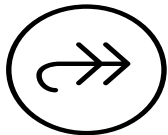


First I made my tap drip!

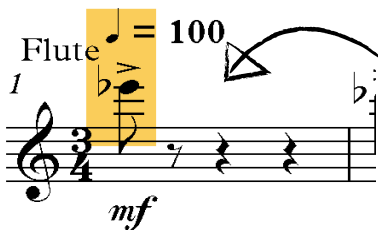
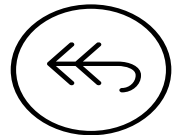
Recorded the tune the tap sang



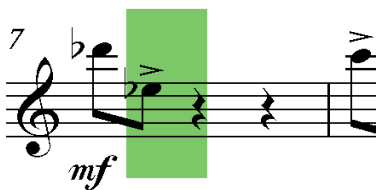
Notated the tune - having decided that it was definitely in 3 time



Played around with it - could it be done upside down? Backwards? Or just a straightforward canon



Having decided on a straightforward canon I allocated different beats of the bar to be in different octaves so that it is easier to hear the different lines of tune. Starting notes being Eb above the staff, Eb in top space of staff and Eb on bottom line of staff.

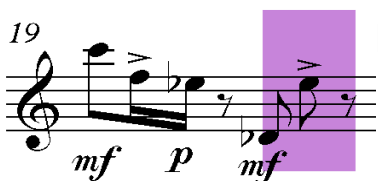


I Allocated dynamics for the melody - again to help define the melodic line



1st part starts bar one, 2nd part enters bar seven, 3rd part enters bar 13, 4th part enters bar 14, 5th part enter bar 19, 6th part enters bar 25. This appears a bit random but gave the effect of backwards at the end of the piece, one line for six notes then two lines for six notes etc.

Worked out which beat each line would be on - part one on beat one, part two on second quaver of beat one etc..



Put the whole piece together - this took a bit of effort.

Asked my flautist to play it!

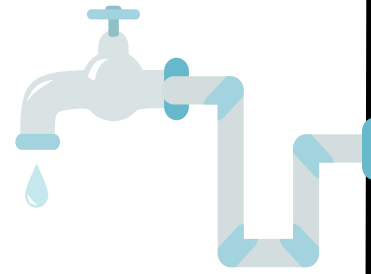


arts active  
actifyddion  
artistig



# Your Challenge

I knew that my piece was part of a collection of pieces I was writing titled 'Water' and that it was scored for a solo flute player.



1. What instrument are you writing for?
2. Listen to the sounds around the home. What sounds are singing to you?
3. Choose a sound/melody.
4. Record the sound .
5. Notate the melody the best you can (try to be as accurate as possible).
6. Play the melody on an instrument. Play it a few times as close to what you have notated.
7. Now play around with the melody - where does it want to go? Can it be played forwards and backwards? Does it need embellishing? Is it a bass line? Can you add chords to it?
8. Decide how you are going to use the melody to create a short piece of between one and two minutes.
9. Practise your piece and record it when it is ready.
10. Send it to Arts Active - [a2@artsactive.org.uk](mailto:a2@artsactive.org.uk)

