



♪ MELODIES & MAESTROS ♪

Beginner Workbook



Composers of Colour



Welcome! Throughout this workbook you will learn all about four Composers of colour.

Let's have a look at who they are:

Florence Price

Born: Arkansas

Died: Chicago

Pieces to listen to:

Symphony No. 1 in E minor
Violin Concerto No.1 in D Major
Suite for Organ No. 1

- Price is noted as the first African-American woman to be recognized as a symphonic composer, and the first to have a composition played by a major orchestra.
- Her melodies were blues-inspired and mixed with more traditional, European Romantic techniques.

George Walker

Born: Washington

Died: New Jersey

Pieces to listen to:

Antifonys for String Orchestra
Lilacs
Spektra

- Walker was the first African American to have won the Pulitzer Prize for Music
- Walker's music was influenced by a wide variety of musical styles including jazz, folk songs, and church hymns, as well as classical music.

Toru Takemitsu

Born: Tokyo

Died: Tokyo

Pieces to listen to:

Dreamtime
A Flock Descends Into The
Pentagonal Garden
Requiem for String Orchestra

- He is known for combining elements of oriental and occidental philosophy and for fusing sound with silence and tradition with innovation.
- He was also a founding member of the Jikken Kōbō

Samuel Coleridge-Taylor

Born: Holborn

Died: Croydon

Pieces to listen to:

The Song of Hiawatha
Symphonic Variations on an
African Air
Violin Concerto in G minor

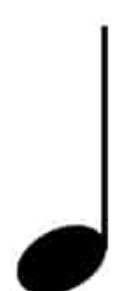
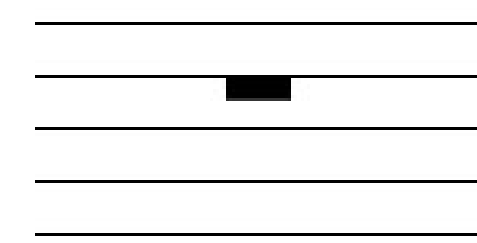
- Of mixed race birth, Coleridge-Taylor achieved such success that he was referred to by white New York musicians as the "African Mahler" when he had three tours of the United States in the early 1900s.
- Coleridge-Taylor premiered The Song of Hiawatha in 1898, when he was just 22.



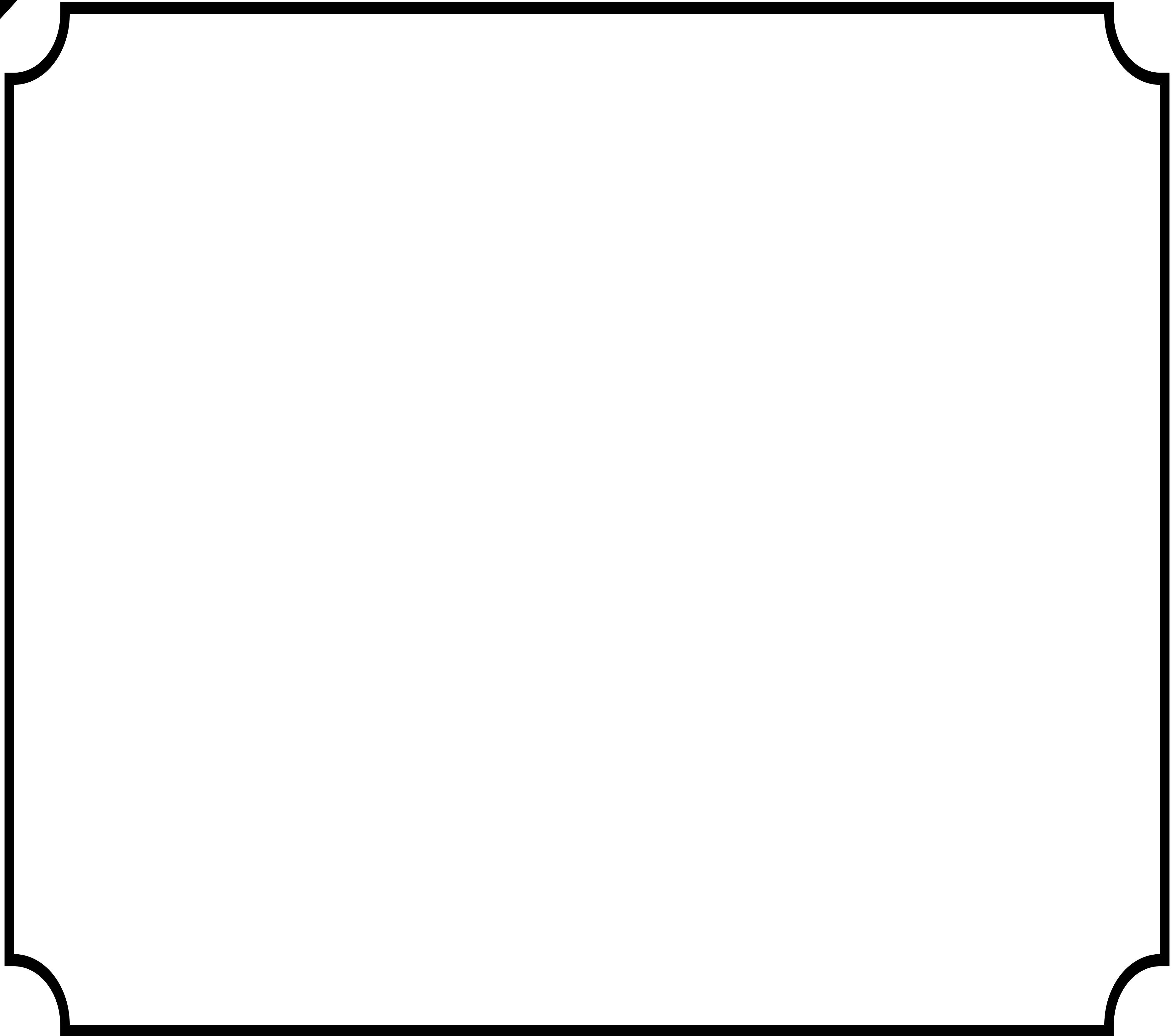
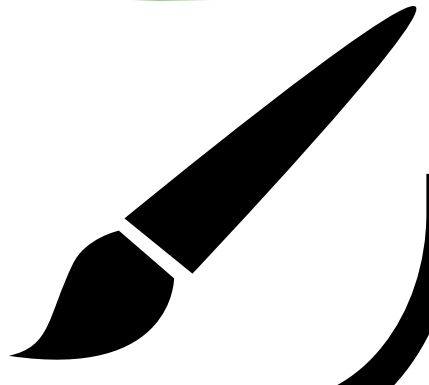
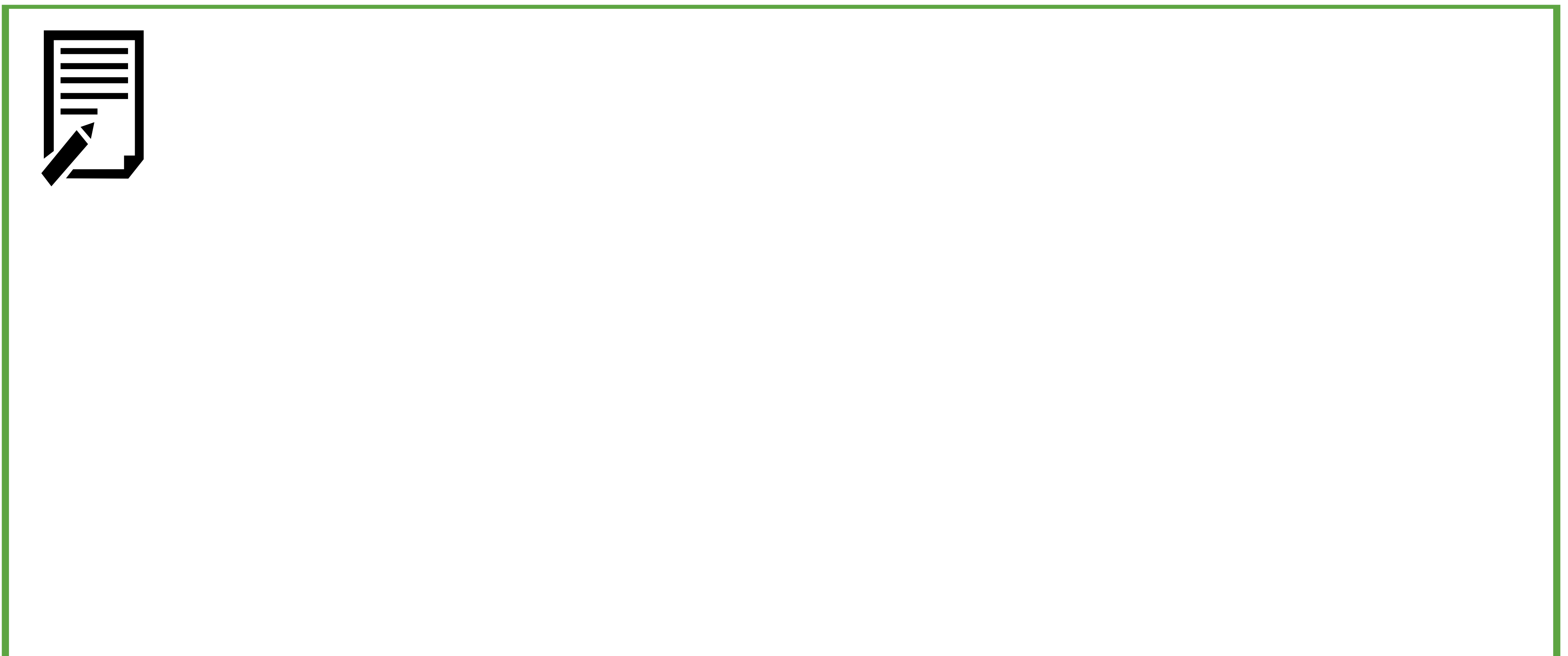
Do you know how many beats these notes are worth?



Here are some examples of rests, can you match them to the note of the same value?



Now we are going to listen to Florence Price's Symphony No.1, Movement 1. Can you draw and describe what you hear?

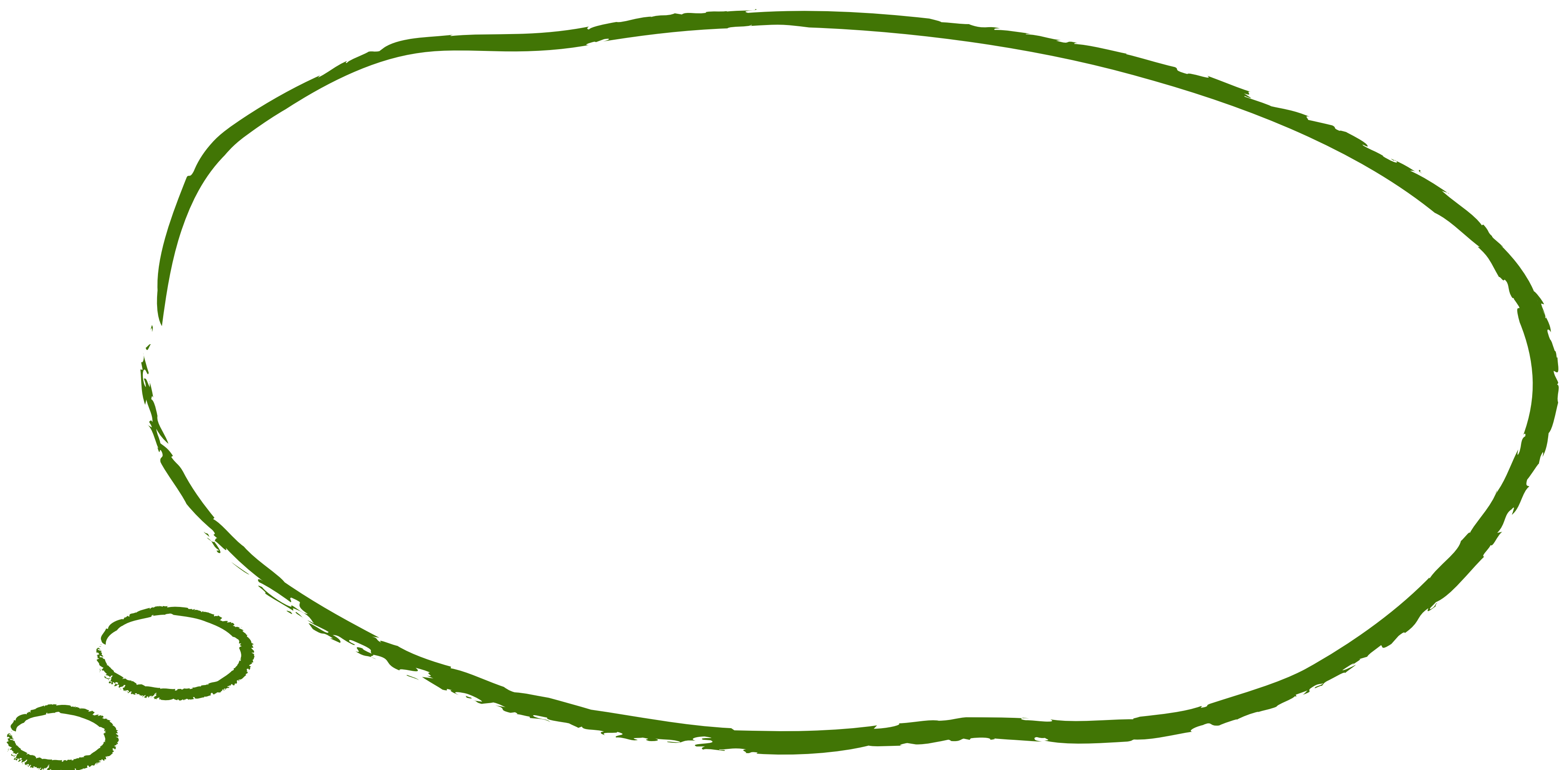
A large, empty rectangular area with a black border and rounded corners, intended for drawing.A large, empty rectangular area with a green border, intended for writing a description.



Can you colour in the picture ?



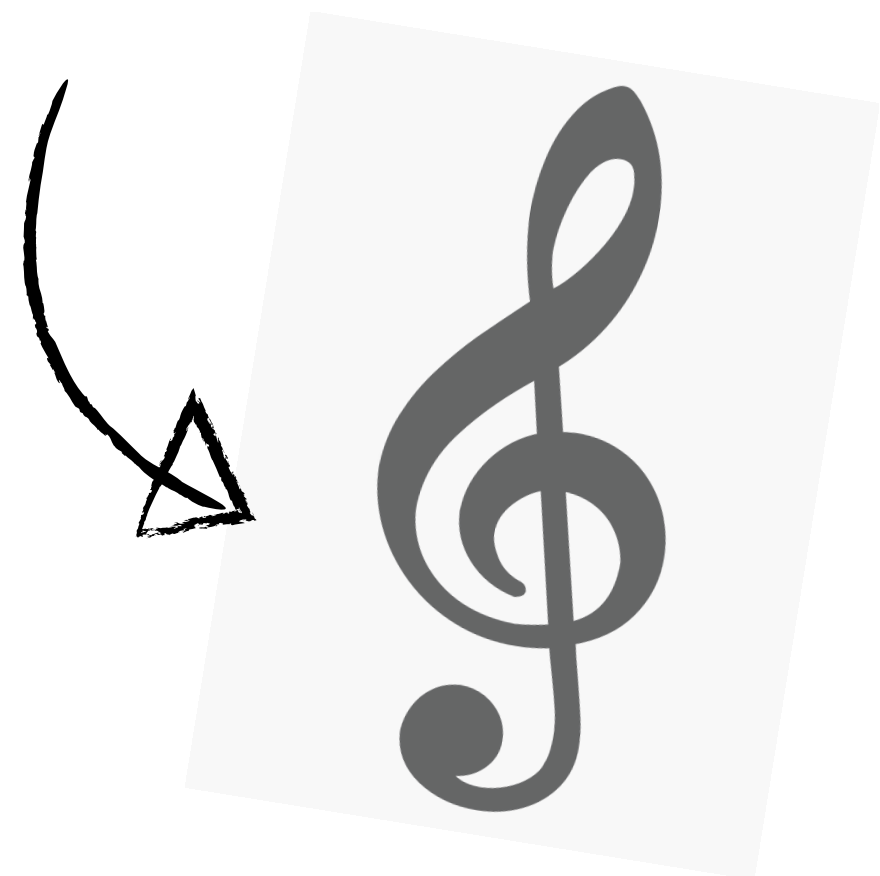
Which instrument is your favourite?



Now we are going to talk
about Clefs

These go at the
beginning of a piece of
music!

This is a
treble clef



This is a
bass clef

Can you practice drawing
these? Use as many colours
as you can!



Can you complete the Wordsearch?

T	R	O	R	C	H	E	S	T	R	A	R	R	E
A	S	R	E	R	T	R	L	E	A	N	O	P	R
K	T	D	P	M	C	E	A	U	R	W	S	P	E
E	E	G	D	I	R	E	L	O	C	A	A	M	T
M	L	C	W	A	L	K	E	R	E	R	S	R	C
I	U	C	O	N	T	E	M	P	O	R	A	R	Y
T	C	M	E	P	R	I	C	E	T	I	U	E	T
S	K	C	O	C	E	R	A	I	I	N	A	M	O
U	E	C	E	P	I	E	C	E	E	C	E	P	A
E	T	R	O	F	C	R	C	M	C	C	A	E	C
C	C	O	M	P	O	S	E	R	C	R	F	E	E
M	U	S	I	C	A	C	O	M	R	T	I	O	R
R	E	E	F	C	A	R	P	R	C	E	I	P	P
R	O	T	A	A	P	I	A	N	O	S	P	P	A

COLERIDGE
CONTEMPORARY
MUSIC
FORTE
COMPOSER
ORCHESTRA
WALKER
PIANO
PIECE
PRICE
TAKEMITSU





Can you listen to Samuel Coleridge-Taylor's - Symphony in A minor, 1st Movement and circle each element of the music as you hear it?

Long notes

Smooth melody
lines

Getting higher in
pitch

Loud
sections

Fast notes

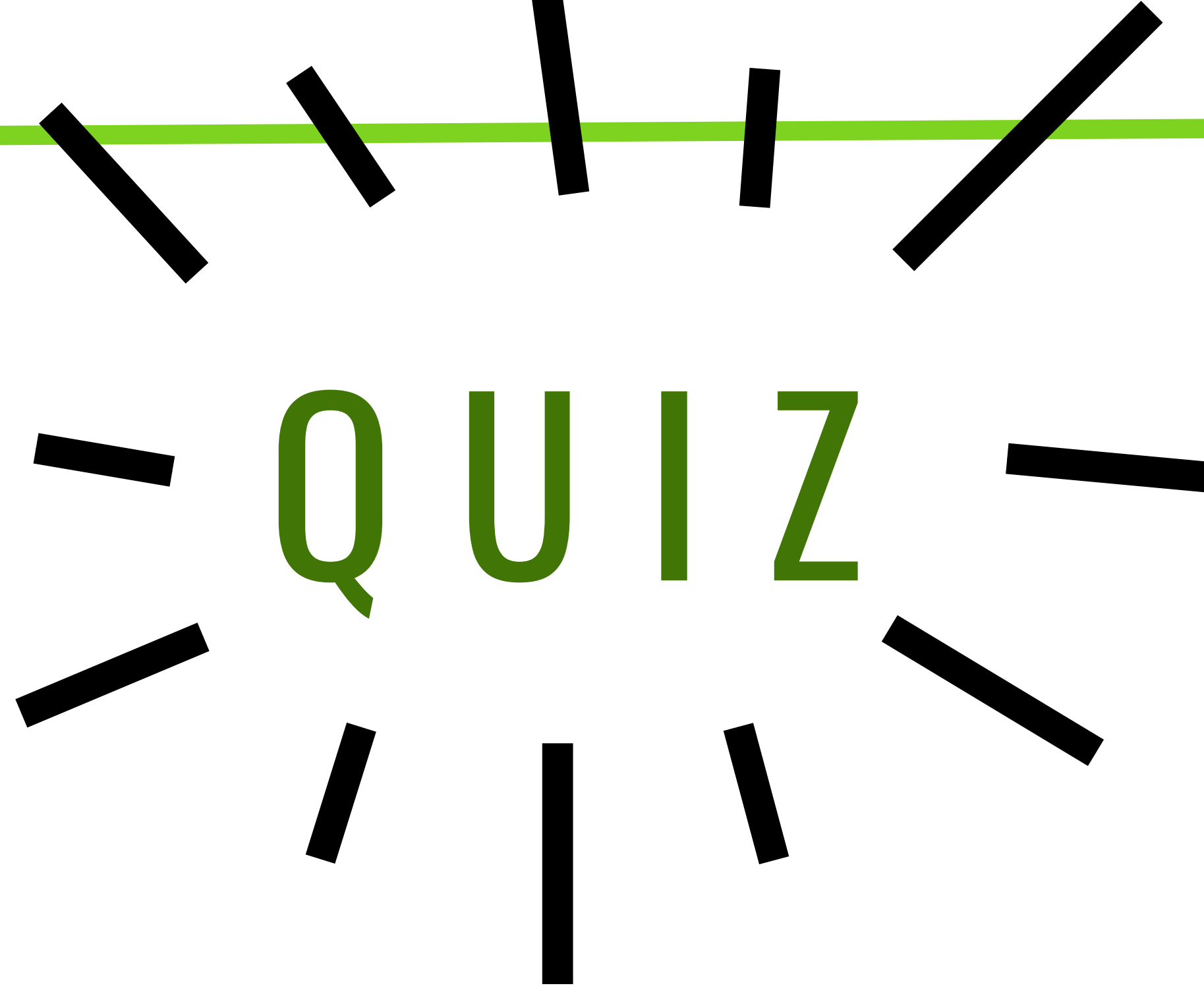
Strings

Horns

Wind Instruments

Quiet sections

Short notes



Let's see what you have learnt!

Where was Samuel Coleridge-Taylor born?

.....

Can you draw two different rests?

.....

Who wrote Lilacs?

.....

Can you draw a treble Clef?

.....

Can you name an instrument used in the piece you heard?

.....