



# ♪ MELODIES & MAESTROS ♪

## Intermediate Workbook



# Composers of Colour



Welcome! Throughout this workbook you will learn all about four Composers of colour.

Let's have a look at who they are:

## Florence Price

**Born:** Arkansas

**Died:** Chicago

**Pieces to listen to:**

Symphony No. 1 in E minor  
Violin Concerto No.1 in D Major  
Suite for Organ No. 1

- Price is noted as the first African-American woman to be recognized as a symphonic composer, and the first to have a composition played by a major orchestra.
- Her melodies were blues-inspired and mixed with more traditional, European Romantic techniques.

## George Walker

**Born:** Washington

**Died:** New Jersey

**Pieces to listen to:**

Antifonys for String Orchestra  
Lilacs  
Spektra

- Walker was the first African American to have won the Pulitzer Prize for Music
- Walker's music was influenced by a wide variety of musical styles including jazz, folk songs, and church hymns, as well as classical music.

## Toru Takemitsu

**Born:** Tokyo

**Died:** Tokyo

**Pieces to listen to:**

Dreamtime  
A Flock Descends Into The  
Pentagonal Garden  
Requiem for String Orchestra

- He is known for combining elements of oriental and occidental philosophy and for fusing sound with silence and tradition with innovation.
- He was also a founding member of the Jikken Kōbō

## Samuel Coleridge-Taylor

**Born:** Holborn

**Died:** Croydon

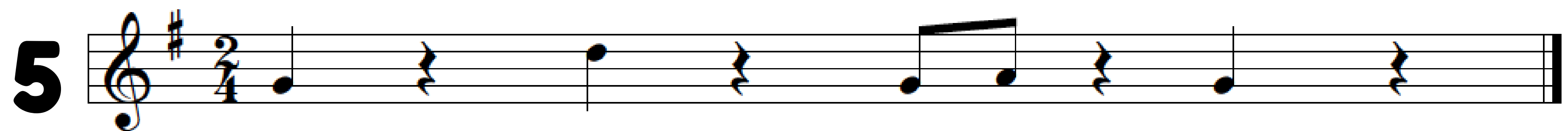
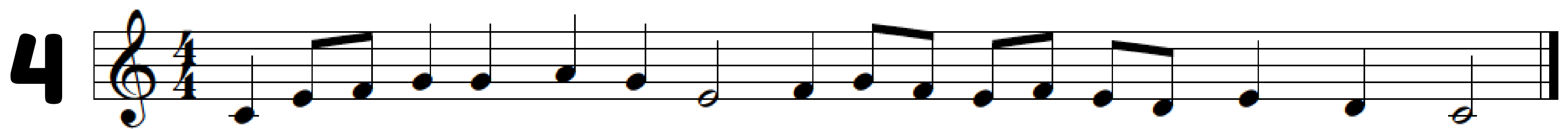
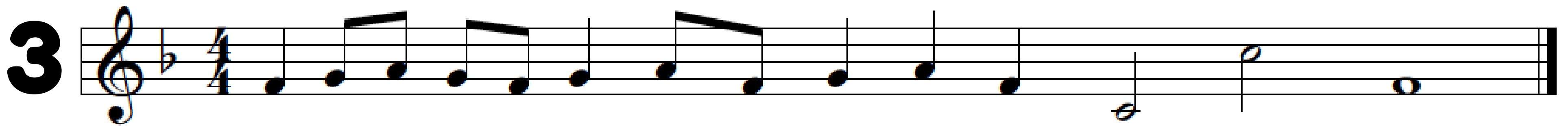
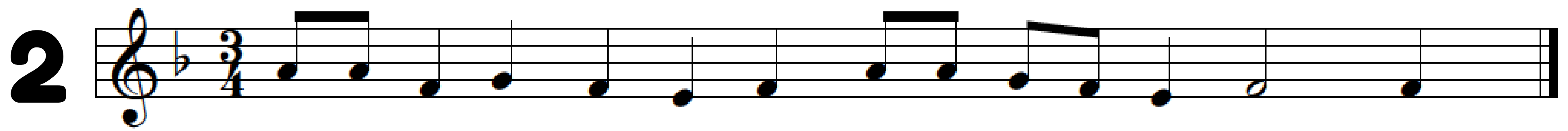
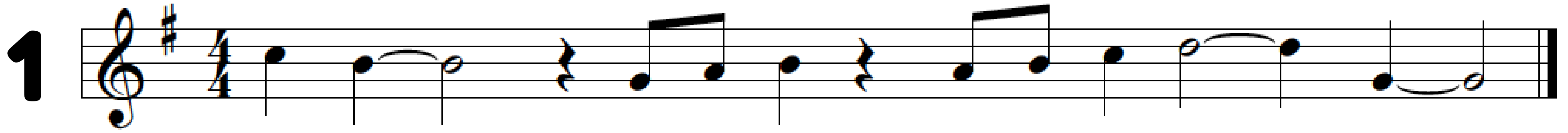
**Pieces to listen to:**

The Song of Hiawatha  
Symphonic Variations on an  
African Air  
Violin Concerto in G minor

- Of mixed race birth, Coleridge-Taylor achieved such success that he was referred to by white New York musicians as the "African Mahler" when he had three tours of the United States in the early 1900s.
- Coleridge-Taylor premiered The Song of Hiawatha in 1898, when he was just 22.



Can you put in the barlines in these pieces?



Bonus Question:  
What key is each  
melody line in?



arts active  
actifyddion  
artistig

Now we are going to listen to Florence Price's Symphony No.1, Movement 1. Can you describe what you hear?

Think about things like:  
Dynamics, Instrumentation,  
Tempo, Pitch



# Key Signatures

## Sharp



## Flat

Key Signatures are found at the beginning of each stave, indicating the key of a composition

They have different sharps and flats depending on which key they are in

**HINT**

**Flats** - For key signatures with flats, the key signature is the second to last flat.

**Sharps** - For key signatures with sharps, the key signature is the note name half a step (semitone) above the last sharp.



.....

Can you  
workout out  
what keys these  
are?



.....



.....



.....



.....

# Listening to Samuel Coleridge-Taylor's, Symphony in A major, 1st Movement..

Using the boxes below, can you describe the music as the piece progresses? Are there any unusual instruments or extremely loud sections?

DESCRIPTION

--	--	--

TIME

-----

DESCRIPTION

--	--	--

TIME

-----

DESCRIPTION

--	--	--

TIME

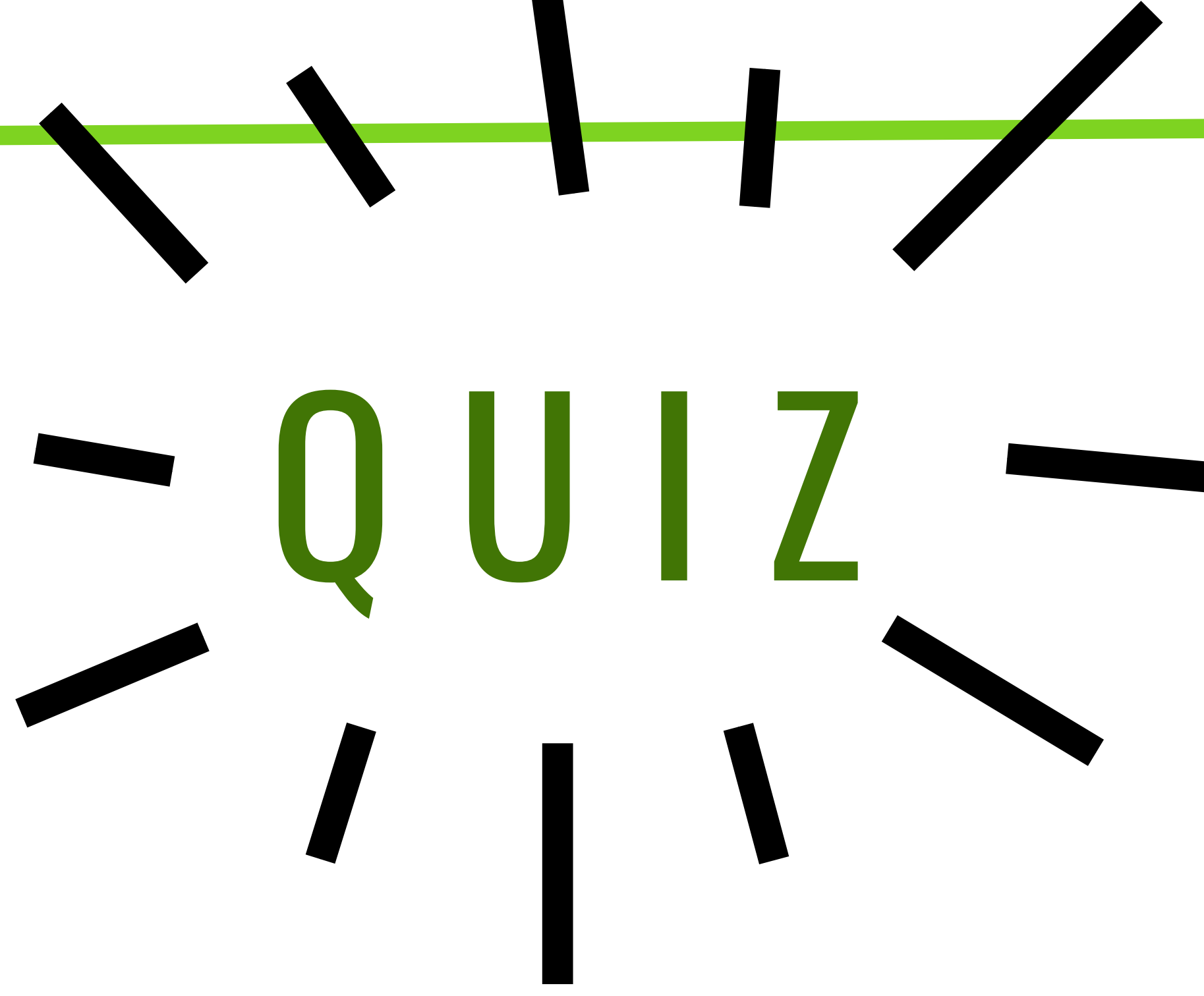
-----

# Can you complete the Wordsearch?

T	R	O	R	C	H	E	S	T	R	A	R	R	E
A	S	R	E	R	T	R	L	E	A	N	O	P	R
K	T	D	P	M	C	E	A	U	R	W	S	P	E
E	E	G	D	I	R	E	L	O	C	A	A	M	T
M	L	C	W	A	L	K	E	R	E	R	S	R	C
I	U	C	O	N	T	E	M	P	O	R	A	R	Y
T	C	M	E	P	R	I	C	E	T	I	U	E	T
S	K	C	O	C	E	R	A	I	I	N	A	M	O
U	E	C	E	P	I	E	C	E	E	C	E	P	A
E	T	R	O	F	C	R	C	M	C	C	A	E	C
C	C	O	M	P	O	S	E	R	C	R	F	E	E
M	U	S	I	C	A	C	O	M	R	T	I	O	R
R	E	E	F	C	A	R	P	R	C	E	I	P	P
R	O	T	A	A	P	I	A	N	O	S	P	P	A

COLERIDGE  
CONTEMPORARY  
MUSIC  
FORTE  
COMPOSER  
ORCHESTRA  
WALKER  
PIANO  
PIECE  
PRICE  
TAKEMITSU





## Let's see what you have learnt!

Where was Samuel Coleridge-Taylor born?

.....

Can you draw two different rests?

.....

Who wrote Lilacs?

.....

Pitch describes....

.....

If two notes of the same name and pitch are played, what is this called?

.....

How many musicians are needed to play a duet?

.....